

DATA ACQUISITION SOFTWARE

# 電腦紀錄軟體

Model : OPM-SW816-32

ISO-9001, CE, IEC1010

[www.yalab.com.tw](http://www.yalab.com.tw)

02-2389-0101

記錄取樣時間：1 秒到 3600 秒

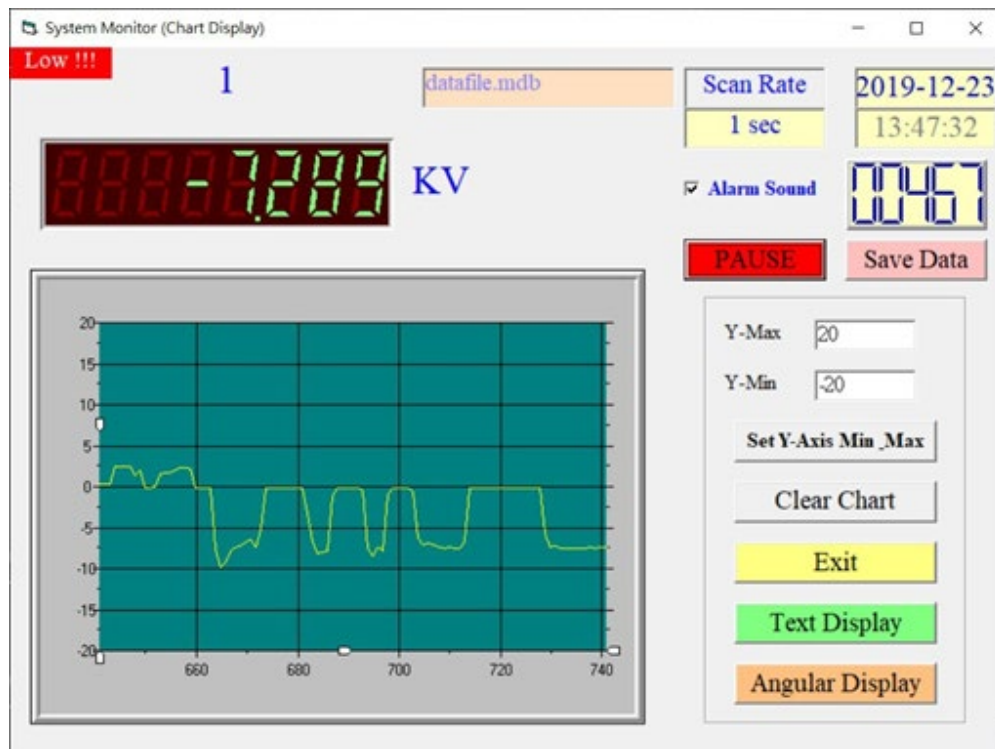
最多 4 組指針表同時顯示

最多 16 組通道同時記錄

警報設定功能

資料可輸出 Excel 試算表

資料可輸出 TXT 文字檔



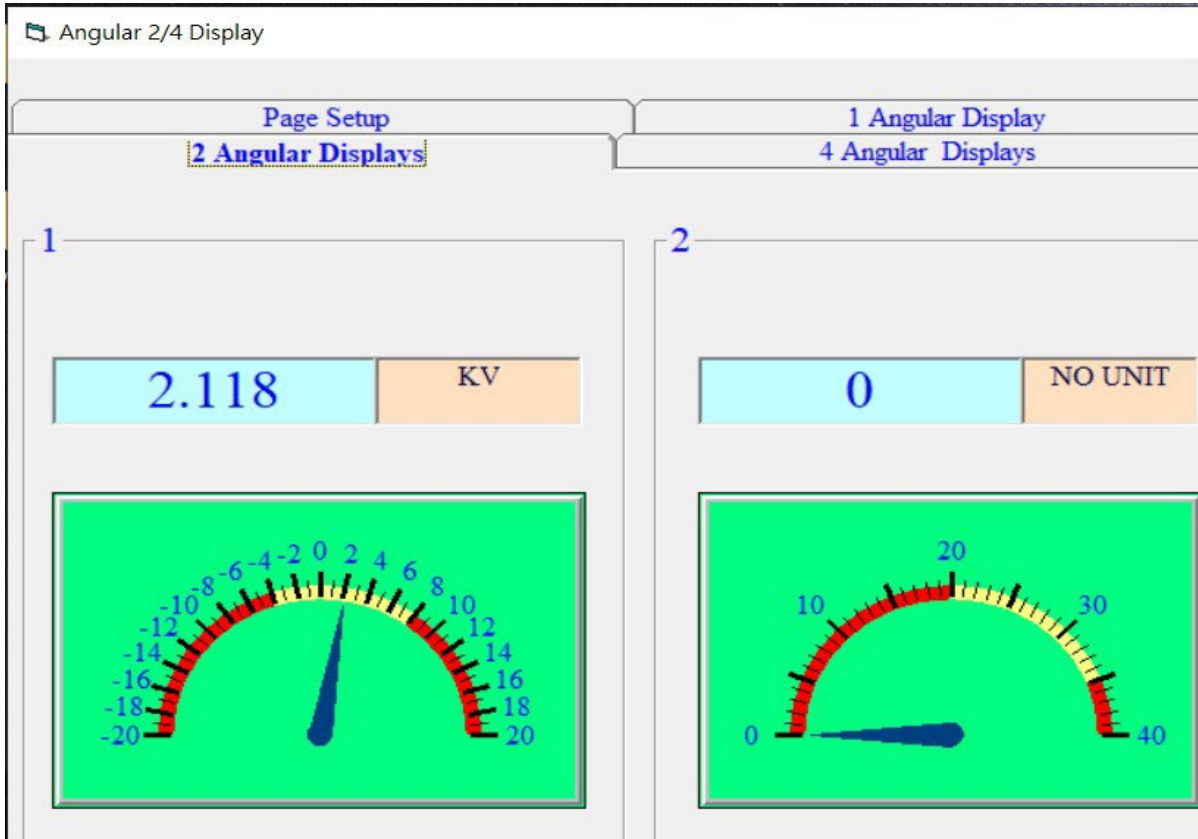
**Lutron**

[www.YaLAB.com.tw](http://www.YaLAB.com.tw)

*The Art of Measurement*

FEATURE

最多 4 組指針表同時顯示



The screenshot shows the configuration menu of the software. It is titled "Angular 2/4 Display". The left side has three sections for display setup: "One Display" with a dropdown for "Display 1" (value 1), "Two Display" with dropdowns for "Display 1" (value 12) and "Display 2" (value 14), and "Four Display" with dropdowns for "Display 1" (value 1), "Display 2" (value 2), "Display 3" (value 3), and "Display 4" (value 4). A "Save" button is located below these sections. The right side has a "Display Setup" panel with the following settings: Channel No (1), Min Value (-20), Max Value (20), Large Tick Delta (2), Small Tick Delta (1), Label Delta (2), High Warning (8), Low Warning (-4), Decimals (2), and Scale (1). There is a checkbox for "Unit Auto Sense" which is checked, and a "Manual Unit" option. On the far right, there is a date and time display (2019-12-23 14:12:49), a digital display showing "0000", a "Scan Rate" of "1 sec", a red "PAUSE" button, and a checked "Alarm Sound" checkbox. At the bottom, there are buttons for "Chart Display", "Text Display", "Exit", and "Save Data".

Text Display

12 Channel Display  
6 Channel Display  
2 channel Display  
Page Setup

16 Channel Display  
8 Channel Display  
4 channel Display  
1 Channel Display

Two Channel Display  
Display 1 1  
Display 2 2

4 Channel Display  
Display 1 1  
Display 2 2  
Display 3 3  
Display 4 4

One Channel Display  
Display 1 1

6 Channel Display  
Display 1 1  
Display 2 2  
Display 3 3  
Display 4 4  
9  
10  
11  
12  
13  
14  
15  
16

2019-12-23  
14:19:35

005

Scan Rate  
1 sec

PAUSE

Alarm Sound

Save Data

Save

Chart Display Angular Display Exit

Grid Display

Start Stop Manual Input Clear To Excel Exit Go To Row

Data No. 28 Set High/Low Alarm  Enable High/Low Alarm Row Height 300

No.	Date	Time	Chan_Name_1	Ch1_Unit	Chan_Name_2	Ch2_Unit	Chan_Name_3	Ch3_Unit	Chan_Name_4	Ch4_Unit	Chan_Name_5	Ch5_Unit
1	2019-12-23	14:21:33		0.553 KV								
2	2019-12-23	14:21:34		0.553 KV								
3	2019-12-23	14:21:35		0.552 KV								
4	2019-12-23	14:21:36		0.552 KV								
5	2019-12-23	14:21:37		0.552 KV								
6	2019-12-23	14:21:38		0.554 KV								
7	2019-12-23	14:21:39		0.511 KV								
8	2019-12-23	14:21:40		0.486 KV								
9	2019-12-23	14:21:41		-7.461 KV								
10	2019-12-23	14:21:42		-7.919 KV								
11	2019-12-23	14:21:43		-7.807 KV								
12	2019-12-23	14:21:44		-7.868 KV								
13	2019-12-23	14:21:45		-7.806 KV								
14	2019-12-23	14:21:46		-7.771 KV								
15	2019-12-23	14:21:47		-8.228 KV								
16	2019-12-23	14:21:48		-8.273 KV								
17	2019-12-23	14:21:49		-8.326 KV								
18	2019-12-23	14:21:50		-8.125 KV								
19	2019-12-23	14:21:51		-6.915 KV								
20	2019-12-23	14:21:52		-6.806 KV								
21	2019-12-23	14:21:53		-6.292 KV								
22	2019-12-23	14:21:54		-5.055 KV								
23	2019-12-23	14:21:55		-4.968 KV								
24	2019-12-23	14:21:56		-4.415 KV								
25	2019-12-23	14:21:57		0.445 KV								

Excel window showing the data table with columns: No., Date, Time, Chan\_Nar, Ch1\_Unit, Chan\_Nar, Ch2\_Unit, Chan\_Nar, Ch3\_Unit.

Find Data

Select Database: C:\LUTRON\SW-E816-32\data\datafile.mdb

Chan. 1     Chan. 5  
 Chan. 2     Chan. 6  
 Chan. 3     Chan. 7  
 Chan. 4     Chan. 8

Select All    Clear

Start Date: 2019/12/24    End Date: 2019/12/24

Start Time: :    End Time: :

Add Time condition    hh:mm    hh(0-23) mm(0-59)

Record No.	date	time	chan 1	unit 1
165	2019/12/24	上午 09:43:50	4.369	KV
	2019/12/24	上午 09:43:51	-0.002	KV
	2019/12/24	上午 09:43:52	0.004	KV
	2019/12/24	上午 09:43:53	0.003	KV
	2019/12/24	上午 09:43:54	0.003	KV
	2019/12/24	上午 09:43:55	-0.001	KV
	2019/12/24	上午 09:43:56	-0.001	KV
	2019/12/24	上午 09:43:57	-0.002	KV

Data Query    Show Chart  
Print Chart    Clear Chart  
Print Data    Exit

Export Data To Excel

Header: Static Voltage  
Footer: ESF-106  
Y-Max: 20  
Y-Min: -20  
Y-Grid: 5  
X-Grid: 10

Setup

Find Data

Select Database: C:\LUTRON\SW-E816-32\data\datafile.mdb

Chan. 1     Chan. 5  
 Chan. 2     Chan. 6  
 Chan. 3     Chan. 7  
 Chan. 4     Chan. 8

Select All    Clear

Start Date: 2019/12/25    End Date: 2019/12/25

Start Time: :    End Time: :

Add Time condition    hh:mm    hh(0-23) mm(0-59)

Record No.	date	time	chan 1	unit 1
234	2019/12/25	上午 11:11:01	0.01	KV
	2019/12/25	上午 11:11:02	0.01	KV
	2019/12/25	上午 11:11:03	0.011	KV
	2019/12/25	上午 11:11:04	0.01	KV
	2019/12/25	上午 11:11:05	0.011	KV
	2019/12/25	上午 11:11:06	0.011	KV
	2019/12/25	上午 11:11:07	0.011	KV
	2019/12/25	上午 11:11:08	0.011	KV
	2019/12/25	上午 11:11:09	0.011	KV

Data Query    Show Chart  
Print Chart    Clear Chart  
Print Data    Exit

Export Data To Excel

Header: Static Voltage  
Footer: ESF-106  
Y-Max:    Y-Min:    Y-Grid: 5  
X-Grid: 10

Setup

Excel Data Table:

	A	B	C	D	E
1		date	time	chan 1	unit 1
2	1	2019/12/25	11:11:01 AM	0.01	KV
3	2	2019/12/25	11:11:02 AM	0.01	KV
4	3	2019/12/25	11:11:03 AM	0.011	KV
5	4	2019/12/25	11:11:04 AM	0.01	KV
6	5	2019/12/25	11:11:05 AM	0.011	KV
7	6	2019/12/25	11:11:06 AM	0.011	KV
8	7	2019/12/25	11:11:07 AM	0.011	KV
9	8	2019/12/25	11:11:08 AM	0.011	KV
10	9	2019/12/25	11:11:09 AM	0.011	KV
11	10	2019/12/25	11:11:10 AM	0.011	KV
12	11	2019/12/25	11:11:11 AM	0.011	KV
13	12	2019/12/25	11:11:12 AM	0.011	KV
14	13	2019/12/25	11:11:13 AM	0.011	KV
15	14	2019/12/25	11:11:14 AM	0.011	KV
16	15	2019/12/25	11:11:15 AM	0.011	KV
17	16	2019/12/25	11:11:16 AM	0.011	KV
18	17	2019/12/25	11:11:17 AM	0.011	KV

\* Appearance and specifications listed in this brochure are subject to change without notice.

OPM-SW816-32+2309

www.YaLAB.com.tw    02-2389-0101